

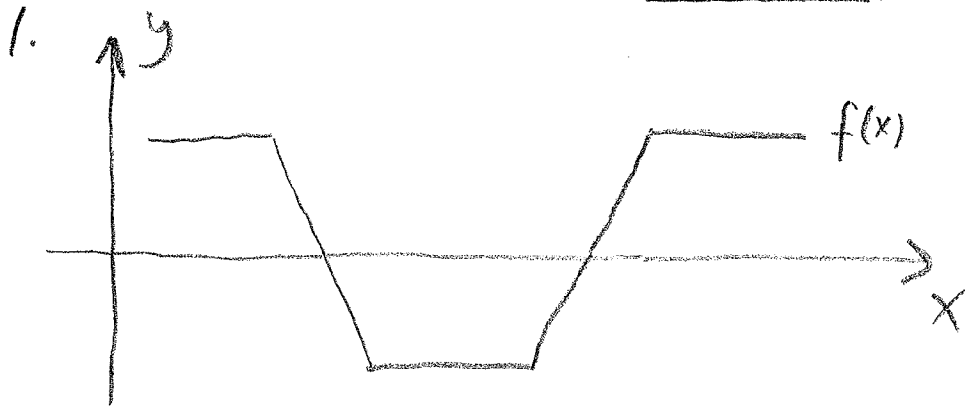
SHEET # 232 :

NAME: \_\_\_\_\_

Period: \_\_\_\_\_

SKETCH  $f'$  FROM  $f$  FOR 3 SIMILAR FUNCTIONS

INSTRUCTIONS : FOR EACH GRAPH,



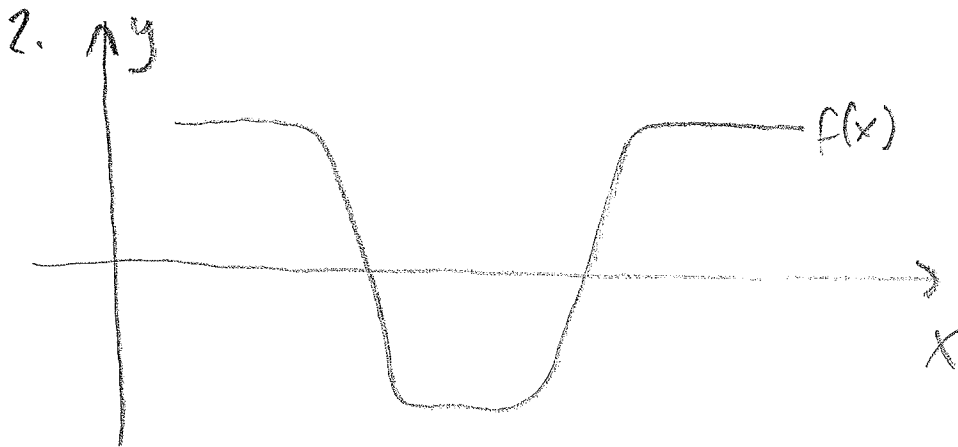
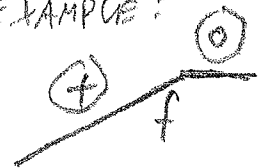
a, MARK  $f(x)$  WITH SIGNS

$\oplus$  FOR  $f$  INCREASING

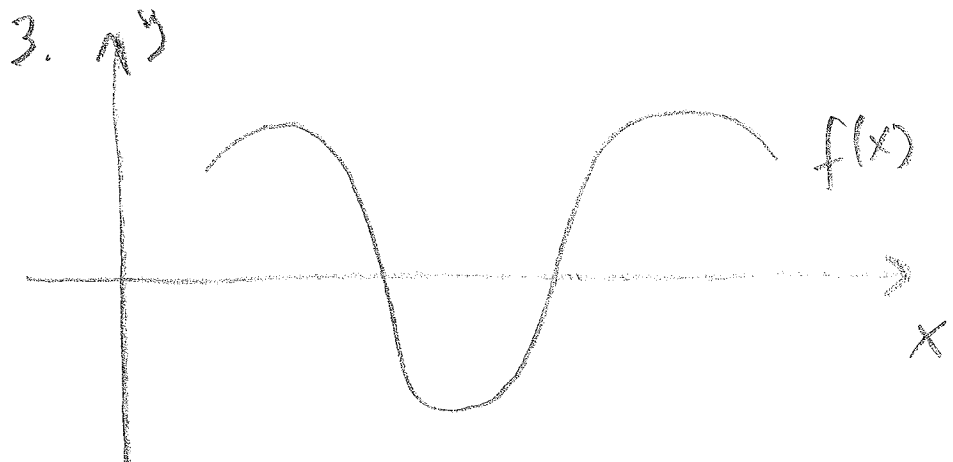
$\ominus$  FOR  $f$  DECREASING AND

$\circ$  FOR  $f$  CONSTANT.

EXAMPLE :



b, WHAT IS THE MEANING OF THE SIGNS IN TERMS OF  $f'(x)$  ?



c, SKETCH  $f'(x)$ .

d, DISCUSS THE CONCAVITY OF  $f(x)$  IN TERMS OF  $f'(x)$  AND  $f''(x)$ .